



Beaufort County Public Works Stormwater Infrastructure Project Summary

Project Summary: Booker T. Washington Circle Channel

Activity: Drainage Improvement

Narrative Description of Project:

Project improved 2,053 L.F. of drainage system. Shinn cut and reconstructed 2,053 L.F. of channel. Constructed 2,053 L.F. of workshelf. Installed (2) access pipes, (2) bleeder pipes, rip rap and hydroseeded for erosion control.

Completion: Nov-14

2011-030 / Booker T. Washington Circle	Labor Hours	Labor Cost	Equipment Cost	Material Cost	Contractor Cost	Indirect Labor	Total Cost
APINS / Access pipe - installed	46.0	\$1,022.32	\$141.35	\$129.88	\$0.00	\$657.08	\$1,950.64
AUDIT / Audit Project	1.5	\$30.69	\$0.00	\$0.00	\$0.00	\$19.85	\$50.54
BPINST / Bleeder pipe - Installed	40.0	\$903.00	\$195.24	\$337.42	\$0.00	\$484.20	\$1,919.86
DLO / Ditch Layout	40.0	\$926.30	\$368.68	\$160.47	\$0.00	\$628.40	\$2,083.85
HAUL / Hauling	154.0	\$3,395.76	\$1,433.80	\$2,376.15	\$0.00	\$2,153.22	\$9,358.93
HYDR / Hydroseeding	22.0	\$518.36	\$93.20	\$285.35	\$0.00	\$352.44	\$1,249.35
LM / Loading Materials	20.0	\$470.20	\$240.00	\$137.25	\$0.00	\$319.50	\$1,166.95
ODCO / Channel - cleaned out	100.0	\$2,288.00	\$1,266.52	\$450.18	\$0.00	\$1,542.30	\$5,547.00
ODGRB / Channel - grubbed	6.0	\$151.67	\$90.38	\$9.15	\$0.00	\$105.57	\$356.77
ODREC / Channel - reconstructed	70.0	\$1,592.20	\$430.24	\$648.71	\$0.00	\$1,070.40	\$3,741.55
ODSHN / Channel - Shinn cut	79.5	\$2,010.37	\$1,059.12	\$532.23	\$0.00	\$1,399.37	\$5,001.08
ONJV / Onsite Job Visit	60.5	\$2,091.78	\$200.91	\$149.50	\$0.00	\$1,435.97	\$3,878.16
PL / Project Layout	7.0	\$309.89	\$25.34	\$23.92	\$0.00	\$237.72	\$596.87
PP / Project Preparation	10.0	\$265.80	\$0.00	\$0.00	\$0.00	\$187.20	\$453.00
PROFS / Professional Services	0.0	\$0.00	\$0.00	\$0.00	\$1,800.00	\$0.00	\$1,800.00
PRRECON / Project Reconnaissance	5.0	\$206.92	\$18.10	\$11.96	\$0.00	\$154.07	\$391.05
RMTRW / Remove trees - Workshelf	20.0	\$482.10	\$253.76	\$134.20	\$0.00	\$331.40	\$1,201.46
TC / Traffic Control - Jobsite	15.0	\$360.95	\$18.10	\$9.15	\$0.00	\$248.05	\$636.25
UTLOC / Utility locates	0.5	\$10.23	\$0.00	\$0.00	\$0.00	\$6.62	\$16.85
WSCON / Workshelf - Constructed	28.5	\$685.77	\$203.95	\$131.15	\$0.00	\$471.30	\$1,492.16
WSDR / Workshelf - Dressed	15.0	\$343.35	\$58.70	\$18.30	\$0.00	\$231.85	\$652.20
WSL / Workshelf - Level	30.0	\$723.15	\$372.26	\$225.70	\$0.00	\$497.10	\$1,818.21
WSREC / Workshelf - Reconstructed	30.0	\$663.20	\$205.76	\$164.70	\$0.00	\$441.60	\$1,475.26
WSSHN / Workshelf - Shinn cut	134.0	\$3,270.04	\$1,394.76	\$768.60	\$0.00	\$2,253.83	\$7,687.22
2011-030 / Booker T. Washington Circle (Sub Total	934.5	\$22,722.05	\$8,070.17	\$6,703.98	\$1,800.00	\$15,229.02	\$54,525.21
Grand Total	934.5	\$22,722.05	\$8,070.17	\$6,703.98	\$1,800.00	\$15,229.02	\$54,525.21

Before



During



After





DeKalb County
Public Works
Stormwater Infrastructure
Project Summary

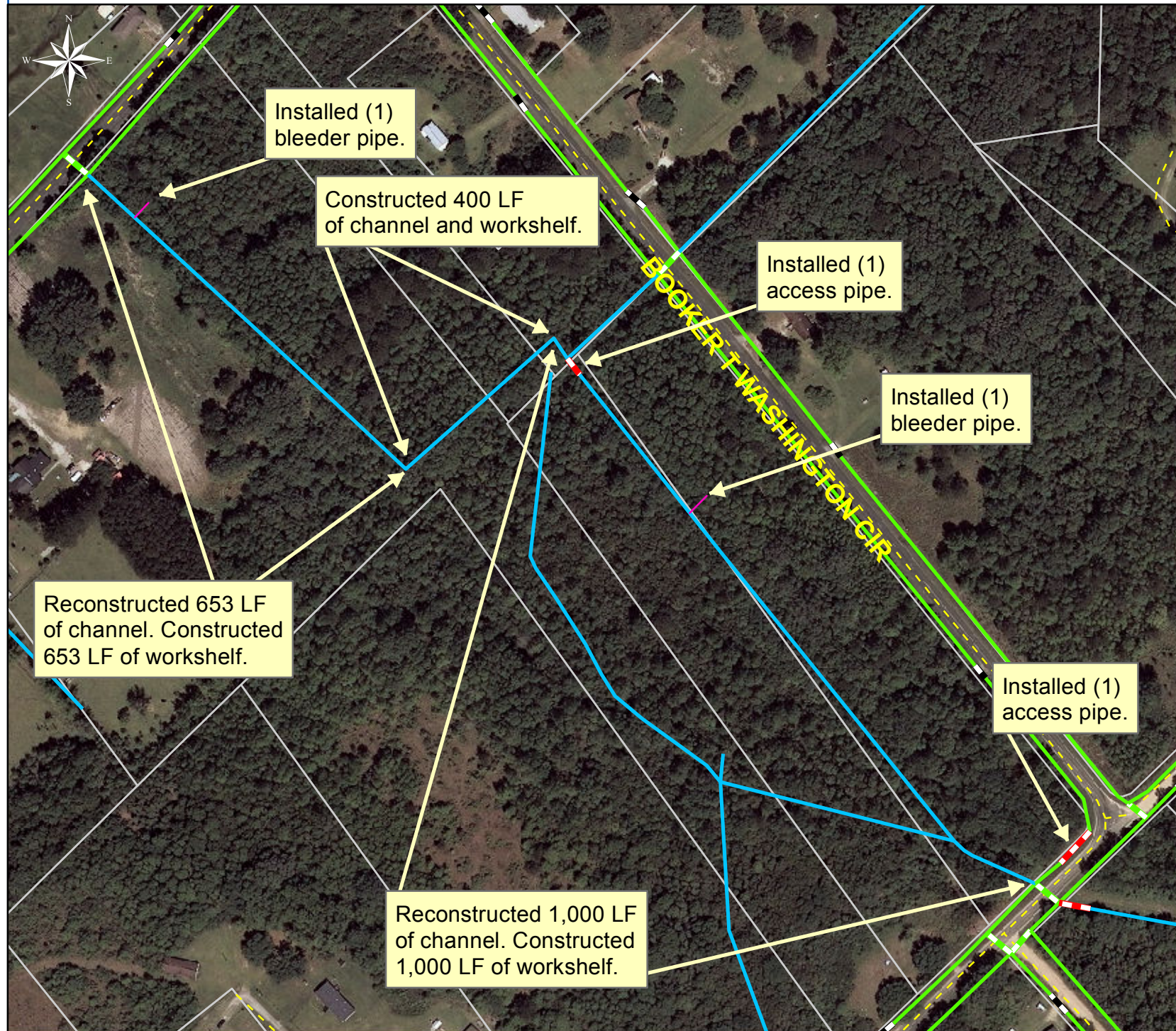
Project: Booker T Washington Circle

Activity: Drainage Improvement

**Project #:
2011-030**

**Township:
Sheldon**

**Completed:
November 2014**



Legend

TYPE

- River
- Creek/Stream
- River/Creek/Marsh BANK
- Channel (fka Outfall)
- Channel Pipe
- Lateral
- Lateral Pipe
- Roadside
- Roadside Pipe
- Road Pipe
- Crossline Pipe
- Driveway Pipe
- Access Pipe
- Bleeder Pipe



1 inch = 209 feet

Prepared By: BC Stormwater Management Utility

Date Print: 12/1/14

File:C:/sethdata/projects/projectmaps/Booker T Washington Cir 2011-030